

# FOR SALE

**±60 ACRES**  
Development Land



**26222 HIGHWAY 16**  
Rural Parkland County, AB

**Victor Moroz, Associate Broker**  
780.499.6400 | [victor@royallepage.ca](mailto:victor@royallepage.ca)

Royal LePage® Noralta Real Estate Inc, Brokerage  
202 Main Street, Spruce Grove, AB  
Independently Owned & Operated

ROYAL LEPAGE®  
**COMMERCIAL™**

# PROPERTY OVERVIEW

**\$6,023,000.00**

## Property Features

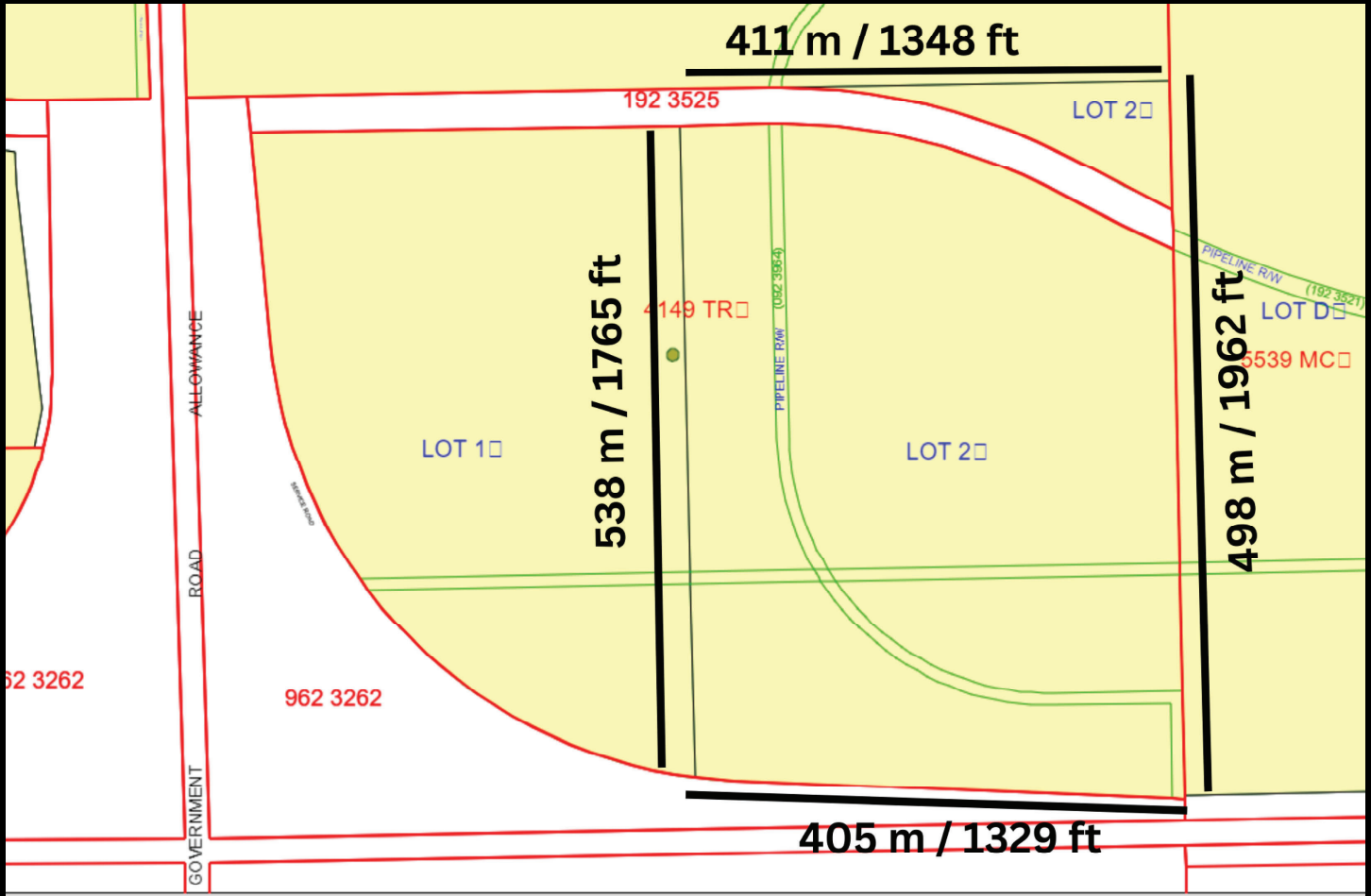
- Prime location ready for residential land development
- Easy access via Highways 16 and 60
- Minutes from Acheson, Edmonton and Spruce Grove
- Potential for single family home &/ or multi-family homes
- Country living conveniently located just minutes from all amenities
- Property has municipal water and sewer lines
- Paved roads to property
- Zoned Country Residential Estate District



# PROPERTY PHOTOS



# SITE PLAN

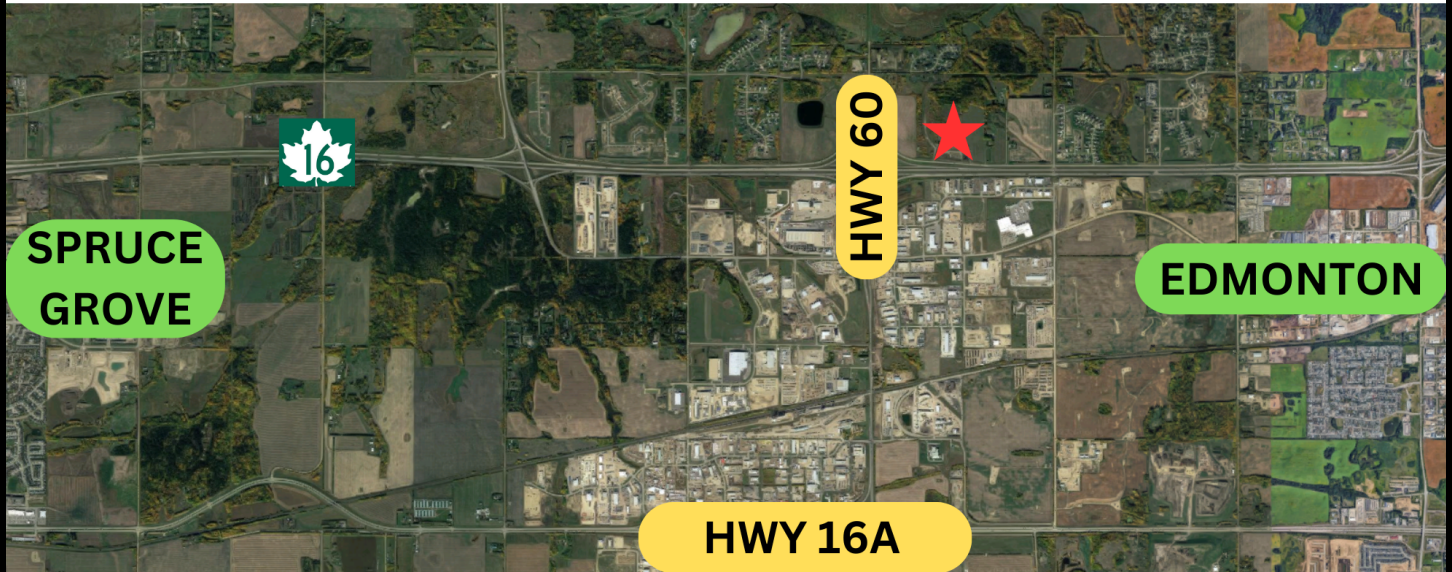


**\*\*Measurements are approximate - Not Guaranteed\*\***



# LOCATION MAPS

## RESIDENTIAL LAND DEVELOPMENT



Royal LePage® is a registered trademark of Royal Bank of Canada and is used under licence by Residential Income Fund L.P., Bridgemarq Real Estate Services Inc. and Bridgemarq Real Estate Services Manager Limited.

All offices are independently owned and operated, except those marked as indicated at [rlp.ca/disclaimer](http://rlp.ca/disclaimer). Not intended to solicit currently listed properties or buyers under contract. The above information is from sources believed reliable, however, no responsibility is assumed for the accuracy of this information ©2024 Bridgemarq Real Estate Services Manager Limited. All rights reserved.